

Capmatic Intrepid Monoblock

Designed specifically to fill and place rubber stoppers on vials, the Intrepid FS62 and family of fillers is perfect for smaller volume products that need to be packaged in a sterile environment.

Evolved from our world famous Patriot filling system, this full feature multi-station monoblock can be configured for left to right or right to left operation. With one of two filling systems, a selection of multiple panel control systems, a variety of pumps, a choice of capping equipment and a range of electrical controls, the Intrepid can be equipped to suit almost any filling, plugging or capping application.

Using the same proven 316 s.s. contact parts and heavy duty construction as many of our other Capmatic machines, the Intrepid is built for quiet operation, quick disassembly and ease of cleaning.

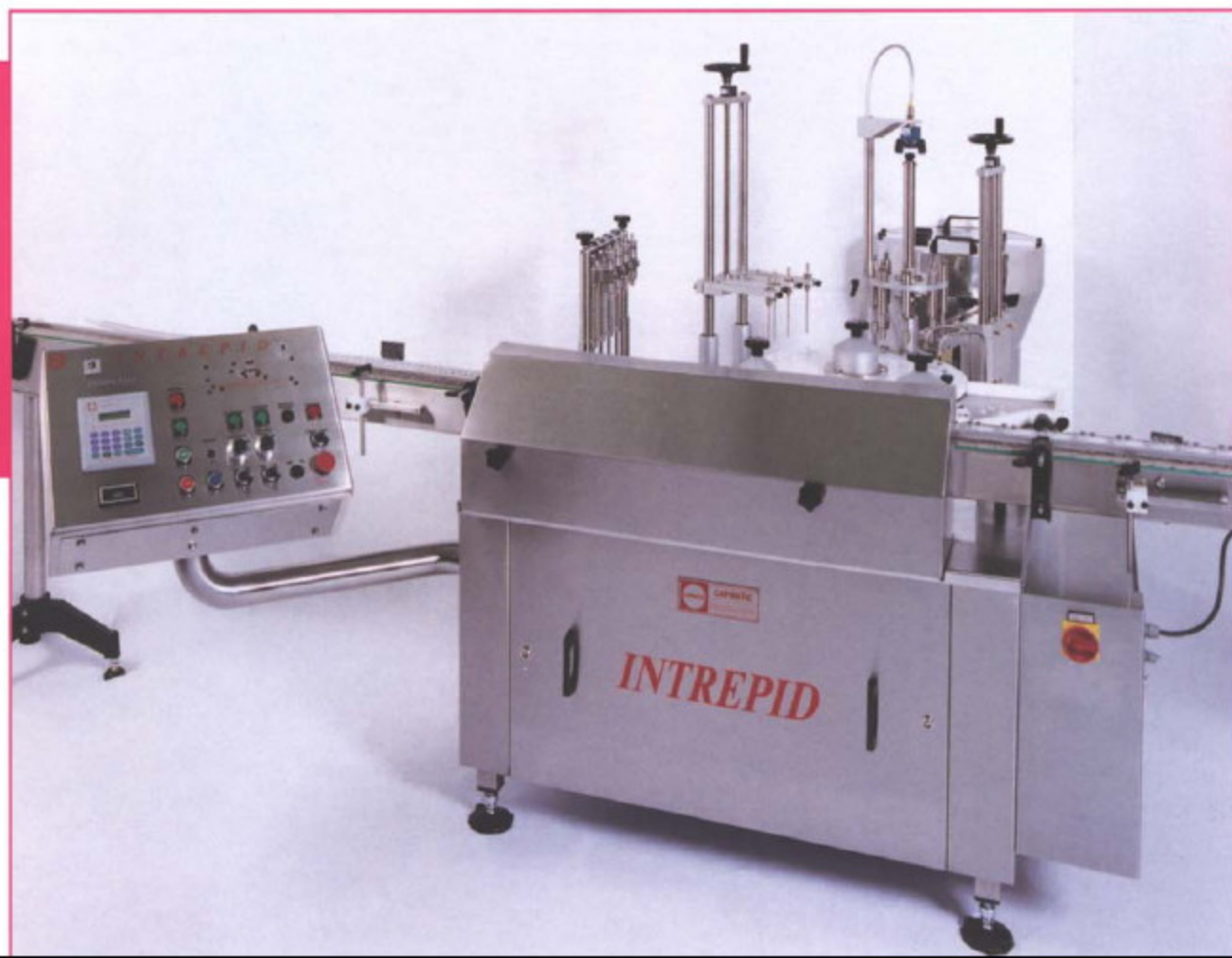
With a full complement of 6 positive displacement pistons the double indexing Intrepid can fill containers from 0.5ml to 500ml (0.02 oz. - 17.5 oz.) at speeds up to 140* bottles per minute. Semi-automatic and higher speed versions are also available.

To ensure product integrity and quality control, the Intrepid can be equipped with an optional low liquid/no cap detect system and reject station. As bottles travel the starwheel sensors scan the bottle to ensure it has been filled and capped. If they detect a problem, the defective bottle is held by a vacuum cup and moved to a holding tray for reprocessing by the operator.

The stainless steel cabinet with its uncluttered, compact, low profile design is ideal for confined areas including clean rooms and laminar flow environments. The simple open design dramatically reduces particle count. All mechanisms including cap and plug feeders have been positioned as far as possible from open containers.

Starwheel safety clutch, gravity driven diving nozzles and strategically positioned guards provide protection for operators. Additional guarding and interlocks are available to suit your specific requirements. Ask about our optional explosion resistant electrics for operation in hazardous environments.

(*Subject to testing of actual samples.)



Choice of Computer and Electrical Controls

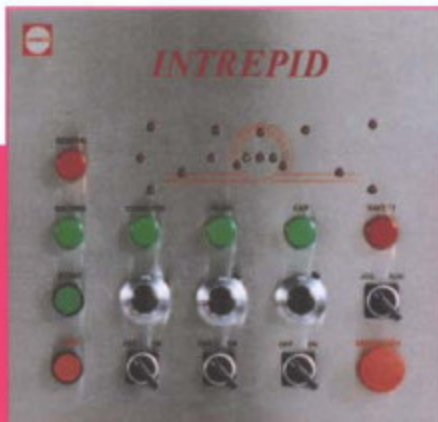
With a selection of optional controllers, the Intrepid can be equipped to suit a variety of needs and budgets. Neatly integrated with each machine the control console is mounted to the chassis on a rigid tubular pedestal arm.

PLC based control provides simplicity of operation and troubleshooting, including fail safe no bottle/cap/plug machine stop safety, ensuring package integrity. Built-in LED's are included to indicate operational status. "On/Off" and Emergency Stop switches are standard.

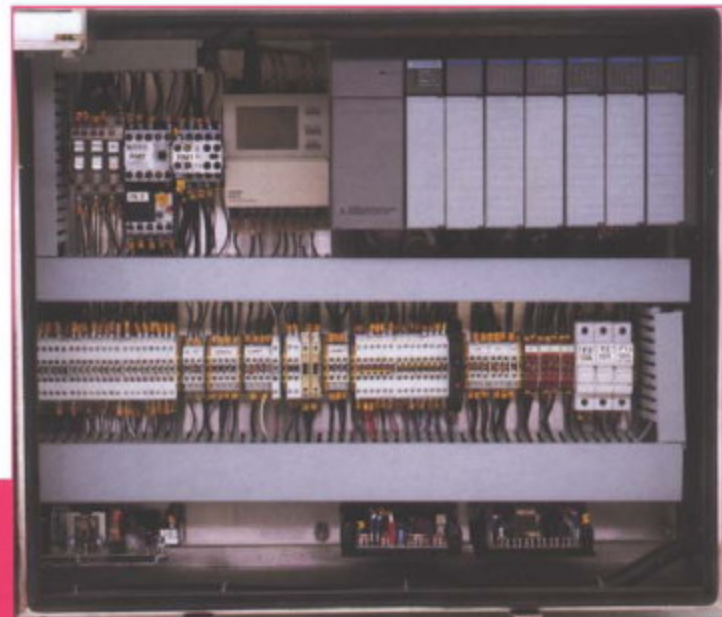
For more demanding filling requirements, the Intrepid can be outfitted with a computerized "Compufill" system. Through touch key entries, this digital unit will precisely control the volume of liquid being placed in each container. These volumes can be stored or recalled from memory and adjusted incrementally as the machine is running.

For the ultimate in control and convenience a state-of-the-art touch screen system can be included. This compact unit incorporates all of the features provided by the "Compufill" system but simplifies setups and reduces operator training and monitoring.

For integration and standardization with existing production equipment, the Intrepid's internal electronic controls can be configured with Allen Bradley, Omron or any other off-the-shelf PLC control equipment.



▲ Standard panel control



▲ Centralized electrical panel control



◀ Compufill panel control



▲ Touch screen control

Filling Options and Features

With its open design concept, the Intrepid can be built with a range of filling equipment and options. From the manually adjusted sequential filling system to the computerized "Compufill" system, Capmatic can provide a volume selection system that meets your needs. Using precision teflon sealed s.s. pumps in sizes and quantities to suit your production requirements, the Intrepid can provide accuracies up to $\pm 0.5\%$, depending on the product. All contact parts can be quickly dismantled for cleaning and autoclaving. For sensitive products and special requirements, the Intrepid can be fitted with any of the following pump options:

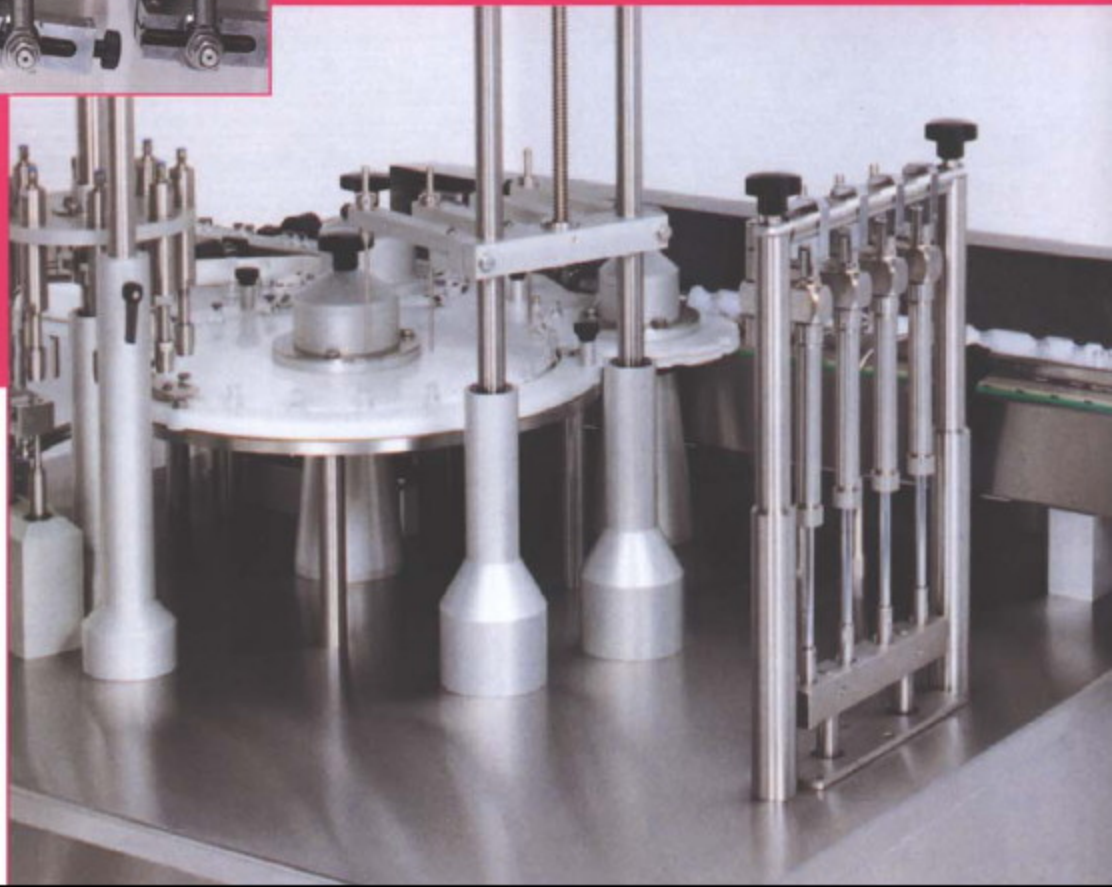
- s.s cylinder with hard chrome piston
- ceramic piston with s.s. cylinder
- glass cylinder with s.s. piston
- pvc cylinder with pvc piston
- mechanically activated check valve - for viscous pastes & creams
- self-cleaning pumps
- rotary pistons
- piston with "tri-clamp" connection
- check weigher with feedback to Compufill control

Diving nozzles are included as standard to reduce foaming, while shutoff nozzles eliminate drips on stringy products.

▼ 4 Station Sequential Filler with micrometer stroke adjustment.



Four Station Compufill System. ▼



Capping Options and Features

To satisfy the broad range of bottle/cap combinations being specified in the packaging industry today, the Intrepid can be equipped to handle the following caps:

- screw
- child resistant
- screw-on pilfer proof
- snap caps
- j-caps
- crimped aluminum
- screw aluminum
- tamper evident membranes
- aluminum liner
- eye dropper
- nasal spray
- pump
- rubber stopper



▲ Fill, stoppering and crimping on the same machine.

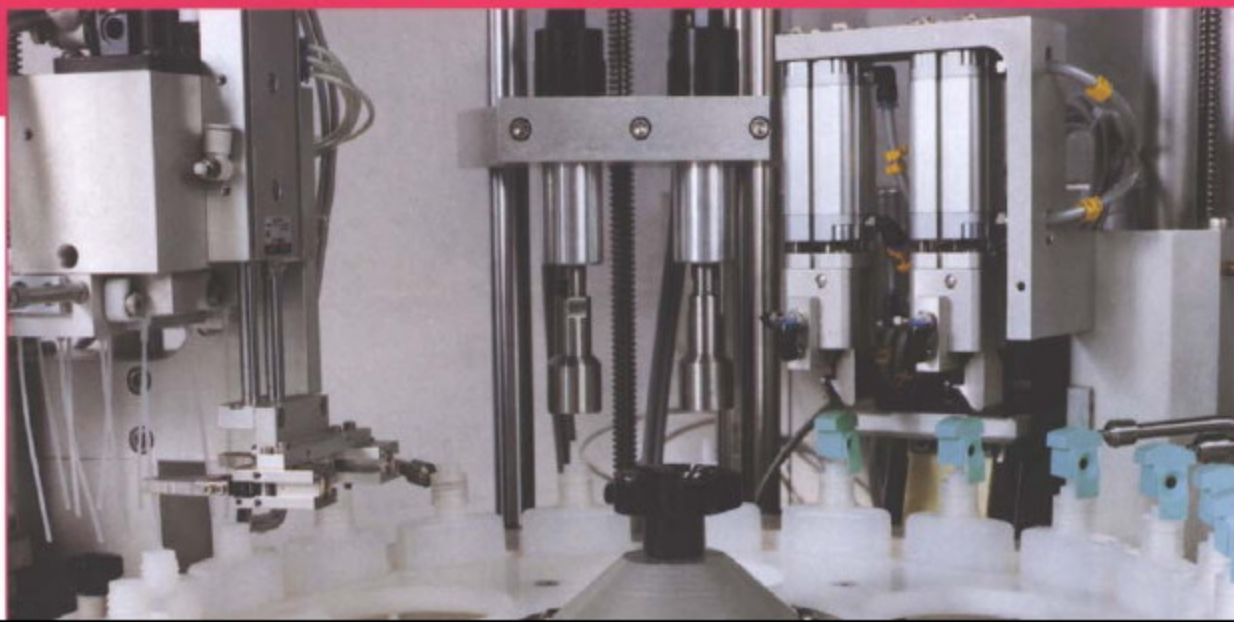
This machine can be supplied with a choice of one or more of the following dedicated cap application systems.

- An air driven cap placement system with single pneumatic torquing station.
- Mechanical driven torquing station with magnetic clutch torque control.
- An air driven pre-spin station to ensure proper thread engagement with a separate pneumatic torquing station.
- A gravity fed aluminum cap placement system with heavy duty head for crimping or screw thread forming.
- Heat seal membrane application (for foil liner).
- Plastic pick and place liner applicator.



▲ Unstable containers in pucks with special caps.

▼ Intrepid configured with tube centering guide for pump applicator with actuator cap.



Multi-Station Bottling, Plugging & Capping

Ease of operation is a design priority. Dedicated change parts can be quickly installed ready for production without further adjustment.

Extremely reliable and precise, the Intrepid is especially designed to handle small containers, plugs and caps.

Easily adjustable, hardened, long life head can be used for crimping or screw threading as well as forming R.O.P.P. aluminum caps. Optional screw cap torquing station quickly replaces crimp head, allowing both screw caps and crimp seals to be handled on the same machine.

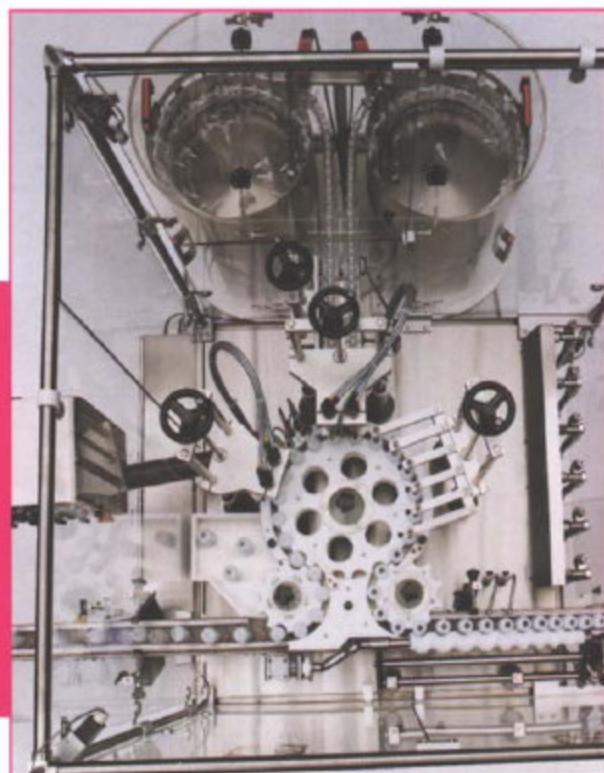
Adjustable cap pre-spin ensures proper thread engagement, with final torquing at an independent station.

Easy Access Orientation Bowls

Positive placement system ensures accuracy and is suitable for a wide range of plugs, dropper tips, orifice reducers and caps. Unique pick and place mechanism assures that rubber stoppers are handled by their tops.

An anti-spin device is included as standard for round containers. Stainless steel feeder bowls (standard for all plugs, rubber stoppers, caps and crimp seals) and dedicated s.s. linear feed tracks can all be quickly removed for autoclaving. Optional bulk plug and cap feeders free operator to concentrate on product quality. For unstable bottles, a bottle unscrambler is available that feeds the bottle directly onto the transporting starwheel.

▼ Euroguard Intrepid with s.s. frame and Lexan panels. (Tempered glass is available)



▲ Top view of Intrepid FC-62 with height adjustment wheels regulated by numeric counters.

BUSCH MACHINERY

Over 30 Years of Applications Expertise

800-840-9573 INTL 520-777-3360

EMAIL: sales@busch-machinery.com

WEBSITE: <http://busch-machinery.com>

Other Features

- **Numeric Counters** - to ensure repeatable setups of previous production runs.
- **Raised Working Surface with Wrapped Edges** - to protect internal components, motors & pneumatics in case of spills.
- **No Tool Changeovers** - to speed setup and reduce production downtime.
- **Overload Detent System** - automatically stops the equipment in the event a fallen container jams the starwheel.
- **Stainless Steel Enclosed Sensors** - to protect sensors and wiring during cleaning.
- **Interlocked Electrical Access Door** - opens to allow full visibility. Interlocked, the power must be disconnected before the door can be opened.
- **Pneumatic Bottle Clamp** - prevents round bottles from spinning.
- **Stainless Steel, Anodized Aluminum and UHMW Polyethylene Plastic Construction**



Optional Equipment

To accommodate the wide range of production requirements used today, the Intrepid can be equipped to satisfy virtually any filling, plugging or capping requirement with one or more of the following options.

- Compufill electronic controls.
- Touch screen panel control.
- Automatic sampling container removal station for quality control.
- Multicolored beacon light to indicate machine status from a distance.
- Choice of 1 to 6 filling stations.
- Euroguard enclosures.
- Interlocked doors.
- Infeed/Outfeed trays.
- Tube centering guide for pump applicators.
- Cap/Bottle elevators.
- Crimping head station.
- Nitrogen purge nozzles.
- Vacuum rubber stopper inserter.
- Torque readout display that allows for accurate and calibratable measurement of actual cap and application torque. Includes single processor and 0 - 50 in. lb. load cell.
- ◀ Silencer covers for vibratory bowls.
- ▼ Reject station for containers with missing product, plugs or caps.



- ◀ *For vials and products having special handling requirements, the Intrepid can be equipped with manually controlled infeed and outfeed trays. This facilitates the filling of containers with unusual shapes or products that need to be transferred off-line for freeze drying operation.*