

BUSCH MACHINERY

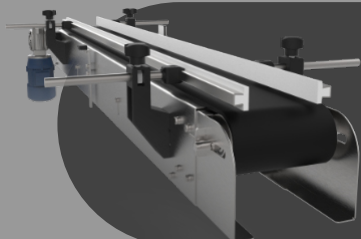
KTL

TOP LABELING SYSTEM

- Speed up to 30 m/min
- Different head options
- Custom transport width
- Built in stainless steel



32 product memories
Numeric keypad with LCD display



Variable speed with automatic synchronization
Adjustable side guides



Busch Machinery, Inc.
727 E. 20th St.
Tucson, AZ 85719
Phone: 800-840-9573 (USA Only)
Fax: 800-840-6270 (USA Only)
Phone 520-777-3360
Fax: 520-777-3369
E-mail: sales.inquiries@busch-machinery.com

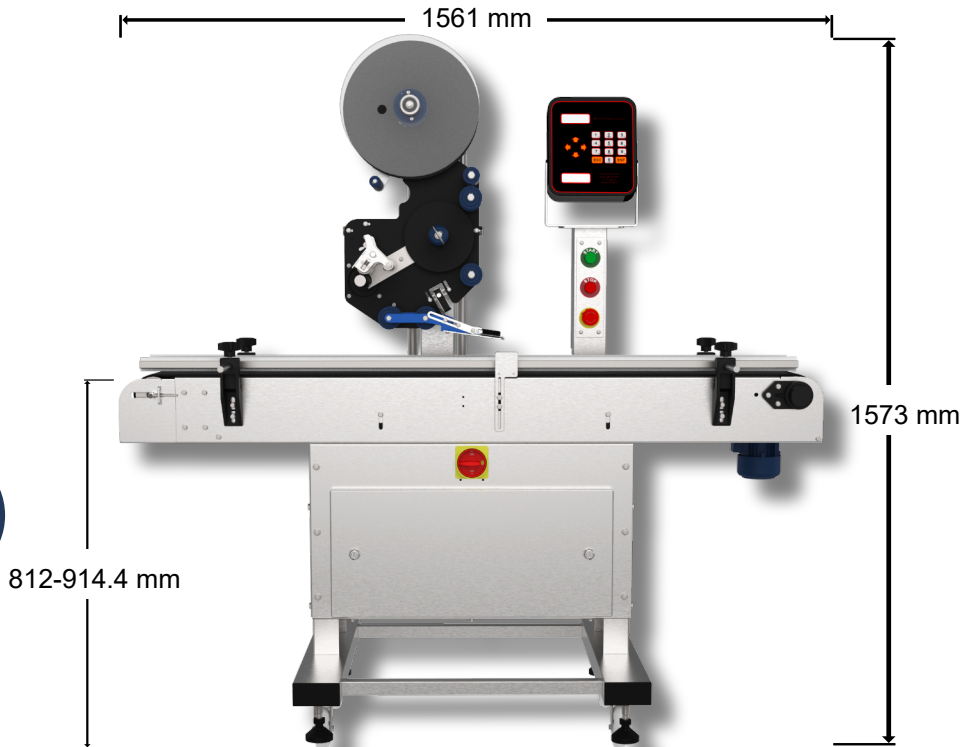


BUSCH MACHINERY

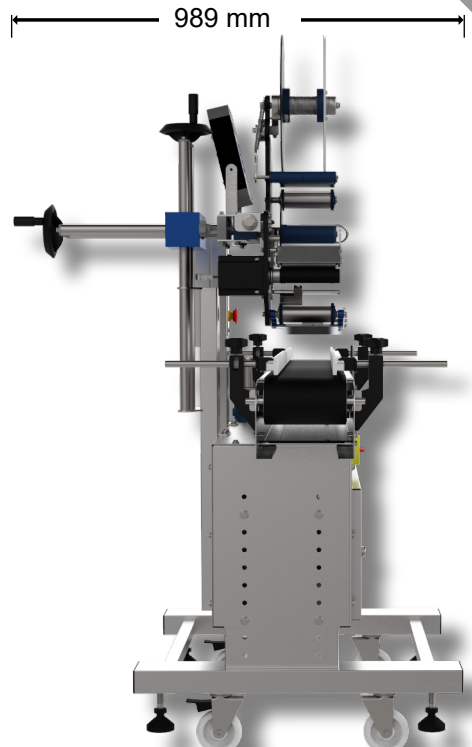
KTL

TOP LABELING SYSTEM

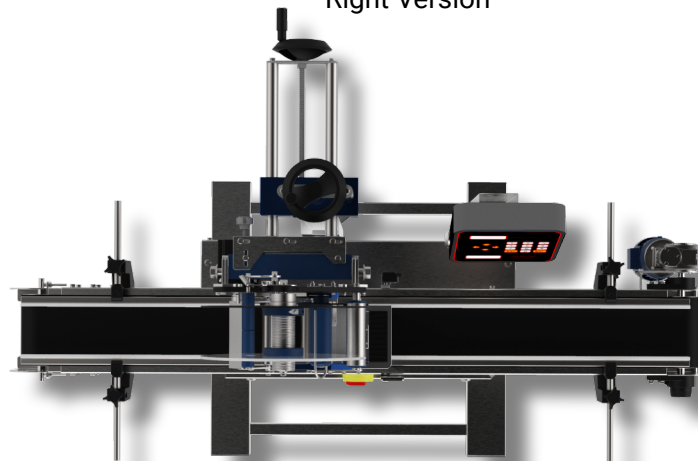
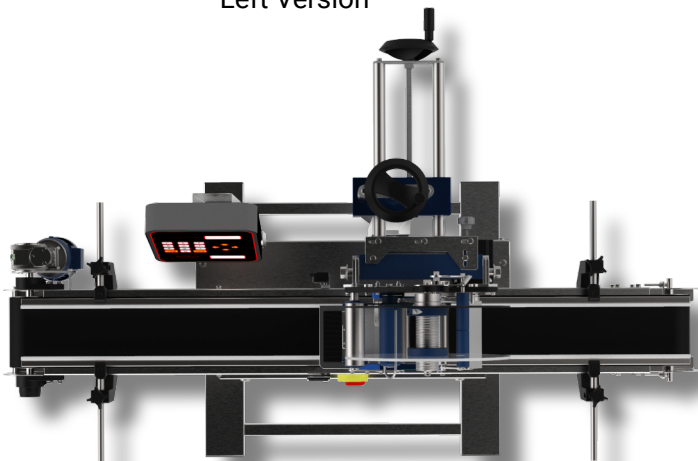
DIMENSIONS



Left Version



Right Version



Busch Machinery, Inc.
727 E. 20th St.
Tucson, AZ 85719
Phone: 800-840-9573 (USA Only)
Fax: 800-840-6270 (USA Only)
Phone 520-777-3360
Fax: 520-777-3369
E-mail: sales.inquiries@busch-machinery.com

KTL

TOP LABELING SYSTEM

DIMENSIONS



Busch Machinery, Inc.
727 E. 20th St.
Tucson, AZ 85719
Phone: 800-840-9573 (USA Only)
Fax: 800-840-6270 (USA Only)
Phone 520-777-3360
Fax: 520-777-3369
E-mail: sales.inquiries@busch-machinery.com

Compatible labeling heads	K50, K200, KLEX
Labeling speed	1-30 m/min
Label width	152.4 mm (6 in) standard Possibility of custom transport width
Paper roll inner diameter	75 mm
Paper roll outer diameter	300 mm
Power supply	1.5 kVA 220V-240V, 50Hz* 110V-120V, 60Hz*
Weight (kg)	200
Dimensions (mm)	1561 x 1573 x 989

* The equipment is only compatible with one type of electrical supply. You must select the appropriate power supply when placing your order.